

ON-FARM EXPERIMENTATION

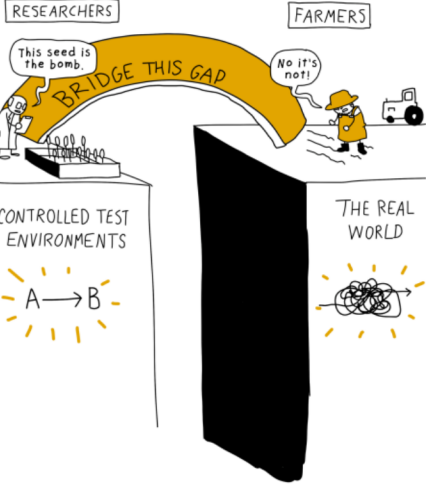
FARMER-CENTRIC
TO TRANSFORM AGRICULTURE

IN FARMING, SOMETHING IS ALWAYS CHANGING. CLIMATE CHANGE AND OTHER THREATS INCREASE RISKS

IN ORDER FOR FARMERS TO FEED THE WORLD AND CARE FOR OUR ENVIRONMENT, FARMING PRACTICES MUST BE ADAPTIVE AND RESILIENT EVERYWHERE



HOW CAN RESEARCHERS AND POLICY MAKERS HELP?



MOST RESEARCH EFFORTS, EVEN ACTION RESEARCH, HAVE DIFFICULTIES TAKING INTO ACCOUNT THE CONTEXT, GOALS AND ISSUES OF THE LOCAL AREA



FARMER-CENTRIC ON-FARM EXPERIMENTATION (OFE) FACILITATES MEANINGFUL CONNECTIONS BETWEEN STAKEHOLDERS



AND WITH ACTIVE GUIDANCE, HELPS TO BUILD A VALUE PROPOSITION THAT BENEFITS ALL STAKEHOLDERS



IN MOST PROJECTS, FARMERS TAKE A REAL RISK WHEN APPLYING SCIENTISTS' RECOMMENDATIONS.



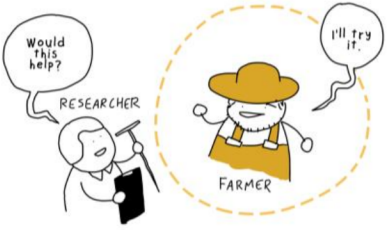
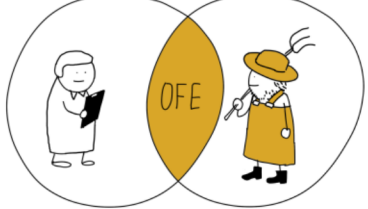
ANOTHER PROBLEM IS THAT SCIENTISTS HAVE DIFFICULTIES INTEGRATING KNOWLEDGE AND DATA FROM FARMERS



BUT IGNORING FARMERS' EXPERTISE IS A BIG MISTAKE



FARMERS HAVE BEEN EXPERIMENTING FOR MILLENIA. IT'S PART OF THE FARMING PROCESS EVERYWHERE. IN THIS EXPERIMENTATION LIES ADAPTATION AND RESILIENCE



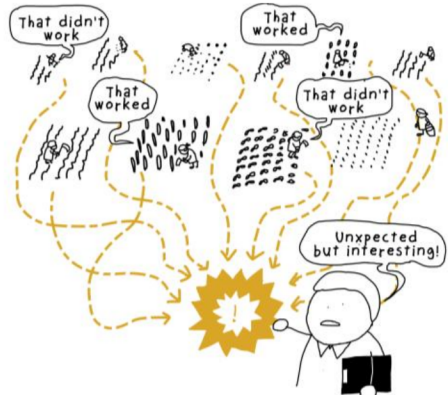
THE ADDED BENEFIT IS THAT LOCAL FARMING INNOVATIONS SPREAD QUICKER: DISCUSSIONS ARE SUPERCHARGED WITH ACTIONABLE OPTIONS



OFE IS MORE THAN RESEARCH - IT CREATES AN INNOVATION SPACE



RESEARCHERS WIN TOO: BY GAINING REAL-WORLD DATA THEY CAN CONTRIBUTE BETTER, MORE RELEVANT SCIENTIFIC KNOWLEDGE



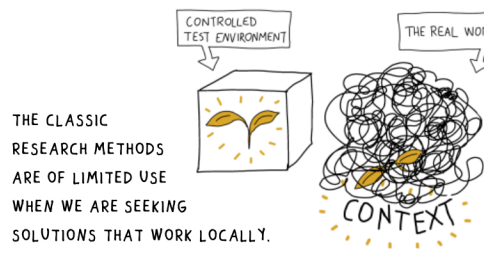
AND FARMERS GAIN VALUABLE INTELLIGENCE BEYOND THEIR FARM.



ONGOING EXPERIMENTATION ENABLES FARMERS TO TAKE PART IN RESEARCH WITHOUT TAKING TOO BIG A RISK



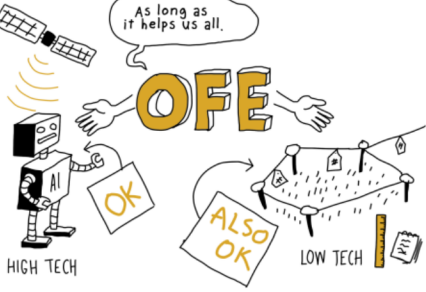
AND BECAUSE RESEARCH HAPPENS IN FARMERS' FIELDS, AND IT'S DONE IN WAYS THAT MATTER TO THEM, IT'S ALWAYS WORTH IT



OFE IS NOT A ONE-SIZE-FITS-ALL METHOD. IT'S AN ONGOING DISCOVERY PROCESS FOR PRAGMATIC SOLUTIONS. ITS IMPACT CAN BE FELT AT ALL LEVELS.



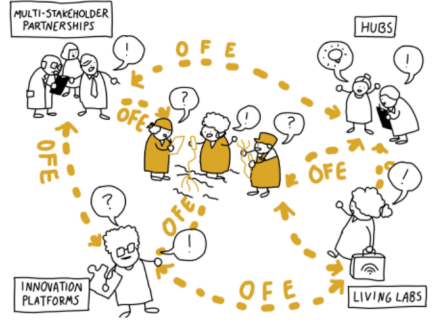
OFE IS ANCHORED IN EVIDENCE AND METHOD-AGNOSTIC



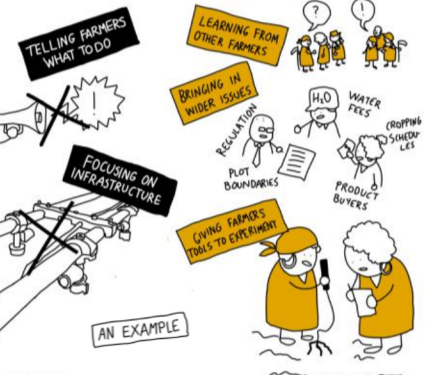
A KEY INVESTMENT IN ANY OFE INITIATIVE IS FOR THE 'SYSTEM CONVENERS' WHO CONNECT DIFFERENT STAKEHOLDERS. NOTHING GETS GOING WITHOUT THEM.



FARMER-CENTRIC ON-FARM EXPERIMENTATION (OFE) FACILITATES MEANINGFUL CONNECTIONS BETWEEN STAKEHOLDERS.



IN SOUTHEAST AFRICA EFFORTS TO IMPROVE IRRIGATION FOR SMALLHOLDERS HAD FAILED. THE T.I.S.A. PROJECT TOOK A DIFFERENT APPROACH: IT CONNECTED FARMERS TO TOOLS AND PEOPLE



AT THE END OF THE DAY, OFE IS ABOUT BUILDING BETTER FOOD SYSTEMS FOR ALL BY FINDING OUT TOGETHER WHAT WORKS WHERE



Myrtille Lacoste, Simon Cook, Louis Longchamps, Matthew McNea & Virpi Oinonen
This comic was funded by the Smith Lever Fund administered by the Cornell University Agricultural Experiment Station and the United States Department of Agriculture, and supported by the MAKTI-FIAS program (Montpellier Advanced Knowledge Institute on Transitions - French Institutes for Advanced Studies), co-financed by the University of Montpellier and by the European Union's Horizon 2020 research and innovation program, within the framework of the Marie Skłodowska-Curie agreement no. 945408.
Cartoon story by Virpi@Businessillustrator.com
myrtille.lacoste.ag@gmail.com